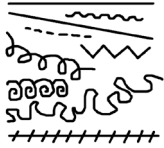


EVERYDAY PEOPLE VIRTUAL SCAVENGER HUNT

Let's Focus on The Elements of Art!



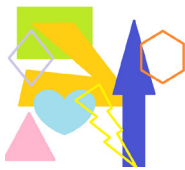
LINE

A moving mark made with a pointed tool such as a pencil or paint brush



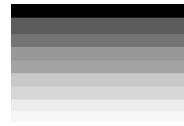
COLOR

One of the most basic elements, color is made up of hue (color name), value (tint or shade) and intensity (brightness)



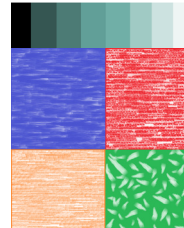
SHAPE

A flat closed-in area made up of lines. Shapes can be organic (curvy) or geometric (sharp and angular).



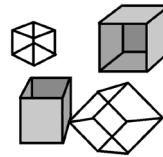
VALUE

The tint and shade or darkness and lightness of a color.



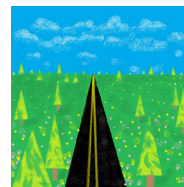
TEXTURE

The way something feels. Artists can create texture on 2D surfaces by using other elements of art to create surfaces that are bumpy, scratchy, silky, etc.



FORM

Items with form take up space, show depth, and can be viewed from many sides. 3D objects such as sculpture are great examples of form!



SPACE

Space is used to create the illusion of depth. Perspective, or the way things look as they go back in a picture plane is used to show space.

Directions

Artists use the **Elements of Art** (Line, Shape, Color, Value, Form, Texture, and Space) in their work to make things look pleasing to the eye, to tell stories, to create feeling and atmosphere, and to give people ways to talk about art.

As you go through the *Everyday People* Virtual Tour, use the clues to discover pieces that use these **Elements of Art**! Each time you find the piece of art you're looking for, write the title of the artwork and the artist's name in the box below your clue.

1. LINE

A circle and book are seen from the top, but it's really the **LINES** that make this piece pop!

2. SHAPE

This country scene looks like a beautiful escape, but what I notice most is **SHAPE**! If you squint your eyes and look through the green, a triangle will appear on the screen.

4. VALUE

The lightest of lights and darkest of darks make the **VALUE** range strong in this piece of art. Houses of dots and unicycle fun, do you think you can find this one?

3. COLOR

Big spots of **COLOR** in a field of blue-green, this loose, lovely painting is a summertime dream!

5. FORM

FORM is what makes art look 3-D, can you see their form when you look at these three? What about when you look at the rocks or the shape of their legs where you see their socks?



EVERYDAY PEOPLE VIRTUAL SCAVENGER HUNT

Canton
Museum
of Art

6. TEXTURE

A scratchy background is all around as these guys play a game in the dark. As I look at the TEXTURE surrounding them, I wonder if their dog ever barks.

7. SPACE

While it looks really crowded in the front of this place, behind all the people I see lots of SPACE. The buildings slant down toward a point off the page, a good use of perspective, I'd certainly say!

Everyday People Wordsearch



KEY

- Burlingham
- Novotny
- Texture
- Vickrey
- Hirschl
- Biddle
- Singer
- Color
- Shape
- Space
- Kuehn
- Line
- Form

E H I N H J R Y V Y I L A U D H B G Y I
 F K O Z T N S P B R Z T L X V W U Z R K
 M M Q U Z N P E D P A E S Y G X R A M X
 L H W P V V R U B J B K I O M U B J Y V
 Q N H F Z R Q D B B F U U F G C O L O R
 E W S R V I C K E R Y D R R M P B M J N
 Z E E C O U C C Z T F J S L A C D S D O
 Q N C V T D A B I D D L E X I D E I T V
 Y L U H L T W Y F P X U N V V N F V V O
 B J P D I F O R M Q N S O S S G G D M T
 L I N E N R T Z Y X A P H U H M M H C N
 R K K Q R N S E G O W A G N C H X M A Y
 G S E I G W U C X C O C Z C N M A R A M
 V S K W H B B J H T Y E J I I B A D V Y
 O B U S I V S D W L U E W O T X I E W H
 W O E D U B U I G S E R W D A S Q R B S
 K K H R G J M A N V K H E R Q H C B V W
 L J N G U A H M J G N H E O K A C P C P
 J T L J T D A P F D E A X O X P L N T D
 T U A N H E M B L G J R J K J E E R Y X

1. Lines, Lines by Robert Vickrey
 2. Log Milk House by Martha L. Burlingham
 3. Summertime by Edmund Kuehn
 4. Carfish Row by George Biddle
 5. Last of the Whiteys by Elmer L. Novotny
 6. Card Players by Milton Hirschl
 7. Street People by Clyde Singer